

ELECTRIC CRANES DT7K



MAX. CAPACITY
2,200 LBS

CRANE RATING
7,000 FT-LBS

MAX. REACH
10 FT

MIN. GVWR
8,000 LBS

CONTROLS
ELECTRIC

FEATURES

■ MANUAL EXTENSION

The standard boom length for the DT7K is 10'.

■ POWERFUL DC ELECTRIC WINCH

The ET series winches combine a powerful permanent magnet DC motor with robust sealing with proven 3-stage, all metal geartrain. Permanent grease lubrication means years of trouble-free service.

■ LIGHT-WEIGHT, PAYLOAD SAVINGS

Increase the payload of your service truck with this low-weight crane while still gaining over 2,000 lbs of capacity.

A SIMPLE SOLUTION.

The DT7K is a 7,000 ft-lb crane with 2,200 lbs of lifting capacity. This crane is a light-weight, cost-effective alternative to our full-featured ET series cranes. The DT7K features an electric winch but includes manual rotation, elevation and boom extension. Boom elevation is 3-pin with a multiple pin-boom extension.

SPECIFICATIONS

Lifting Capacities:	2,200 lbs
Crane Rating:	7,000 ft-lbs
Mounting Space:	12" x 12"
Stowed Height:	31"
Rope Diameter:	3/16" @ 50'
Line pull speed:	25 ft/min (Single-line) 7 ft/min (Double-line)
Max. Single-line:	1,100 lbs
Max. Double-line:	2,200 lbs
Rotation:	360° Continuous
Power Supply:	Electric 12V DC
Requirements:	12v DC Battery
Hydraulic Req:	No Hydraulics
Boom Elevation:	0° to +75°
Controls:	12V DC On/Off Winch
Boom Elevation:	3-Pin, Multiple Degree
Boom Extension:	Manual: 6' - 10'
Minimum Vehicle Class:	Class 2 (8,000 lbs GVWR)

OPTIONS & ACCESSORIES

Mounting Pedestals

21" and 36" pedestals for platform bodies

Outrigger Packages

DT7K requires rear outrigger packages that include either Manual-Out/Manual-Down.

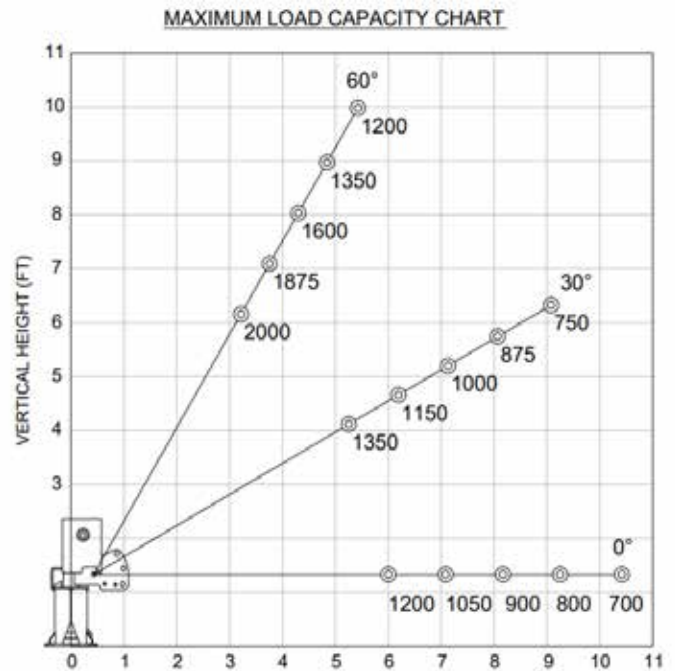
Standard Corded Remote

The DT7K includes a standard 15 ft corded controller.

Circuit Breaker Kit

A recommended 250 AMP Circuit Breaker Kit should be used for the DT7K.

MAXIMUM LOAD CAPACITY CHART



NOTE: All Venturo service cranes meet ANSI B30.5 and OSHA 1910.180 specifications. Specifications subject to change without notice. Copyright © 2019 Venco Venturo Industries LLC. All Rights Reserved.